

# COATS®

## 1000/1000D

### Solid State Computer Wheel Balancer

*1000/1000D Estado Sólido*

*Balancedora de Ruedas con Computadora*



### *Parts Identification e Identificatió n de Partes*

READ these instructions before placing unit in service KEEP these and other materials delivered with the unit in a binder near the machine for ease of reference by supervisors and operators.

LEER estas instrucciones antes de poner la unidad en servicio. CONSERVAR estos y otros documentos entregados con la máquina, en una carpeta cerca de la misma para facilitar la consulta por los supervisores y operarios.

**HENNESSY INDUSTRIES, INC.**

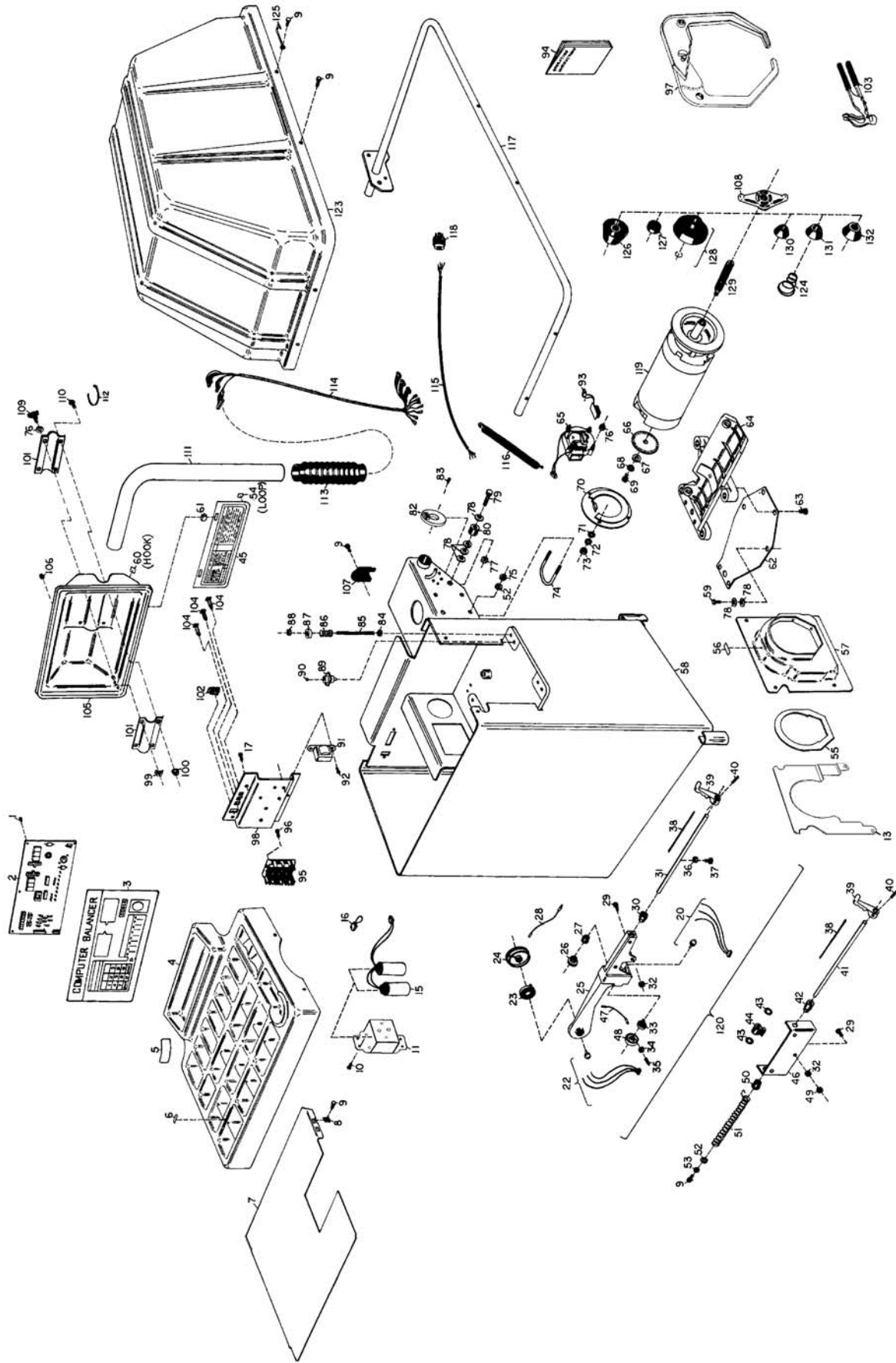
1601 J. P. Hennessy Drive, LaVergne, TN USA 37086-3565 615/641-7533 800/688-6359

HENNESSY INDUSTRIES INC. Manufacturer of AMMCO®, COATS® and BADA® Automotive Service Equipment and Tools.

Manual Part No.: 85009055 06

Revision: 04/14

**1000/1000D Parts Identification**  
**1000/1000D Identificación de Partes**



ITEM	PART NO.	DESCRIPTION	ITEM	PART NO.	DESCRIPTION	ITEM	PART NO.	DESCRIPTION	ITEM	PART NO.	DESCRIPTION	ITEM	PART NO.	DESCRIPTION	ITEM	PART NO.	DESCRIPTION
1	8301063	Screw, #8-32 X 1/2" PHM	47	8110913	"D" Cable	94	85009054	Operations Manual	131	8110411	Cone, Medium	119	8112945	Motor	120	8110920	Distance Gauge Assembly
2	8114025	PCB Assembly	48	8110914	"D" Pulley	95	8114002	Motor Control Board	95	8112099	Cone, Medium, 40MM	120	8110920	Distance Gauge Assembly	121	8110920	Hood
3	8110721	Touch Panel	50	8308074	Bushing, Rear	96	8113996	Standoff, 8-32 male, 3/4"	96	8110412	Cone, Large	123	8308060	Hood	124	8308820	Spring, Back Cone
4	8111035	Weight Tray	51	8308023	Spring	97	8309011	Caliper Assembly	97	8309011	Caliper Assembly	124	8308820	Spring, Back Cone	125	8111021	Hanger, Caliper
5	8113927	Decal, "Caution"	52	8301032	Washer 3/8, Flat	98	8110821	Power Panel	98	8110821	Power Panel	125	8111021	Hanger, Caliper	126	8308095	Adapter, Large
6	8314005	Decals, Weight Tray Bins	53	8301142	Washer, 1/4 Lock	99	8143044	Nut, 3/8-16 Tinnerman	99	8143044	Nut, 3/8-16 Tinnerman	126	8308095	Adapter, Large	127	8308105	Ring, No-Mar
7	8111064	Shield, Weight Tray	54	8110956	Velcro Patch, Loop	100	8106303	Nut, 3/8-16 WH	100	8106303	Nut, 3/8-16 WH	127	8308105	Ring, No-Mar	128	8110542	Pressure Cup
8	8106304	Nut, Tinnerman 1/4-20	55	8308536	Gasket, Motor	101	8110795	Clamp, Pod 102	101	8110795	Clamp, Pod 102	128	8110542	Pressure Cup	129	8112106	Pressure Cup, 40MM (SC)
9	8106301	Screw, 1/4" Hex Self-Tap	56	8120446	Decal, Rotation	102	8305802	Switch, ON/OFF	102	8305802	Switch, ON/OFF	129	8112106	Pressure Cup, 40MM (SC)	130	8308171	Stub Shaft
10	8111542	Screw, #8-32 X 5/8" SEM	57	8110962	Cover, Motor	103	8113175	Weight Hammer/Pliers	103	8113175	Weight Hammer/Pliers	130	8110410	Cone, Small	130	8110410	Cone, Small
11	8110537	Panel, Capacitor	58	8111048	Chassis	104	8111218	Breaker, 2 Amp	104	8111218	Breaker, 2 Amp	131	8110411	Cone, Medium	131	8110411	Cone, Medium
13	8111308	Shield Motor Cover	59	*85609427	3/8-16 x 1/2 SHSHS Screw	105	8111031	Pod	105	8111031	Pod	132	8112099	Cone, Medium, 40MM	132	8112099	Cone, Medium, 40MM
15	8112356	Capacitor	60	8110955	Velcro Patch, Hook	106	8111055	Nut, #6-32 Acorn	106	8111055	Nut, #6-32 Acorn	133	8112100	Cone, Large, 40MM	133	8112100	Cone, Large, 40MM
16	8112224	Jumpers, Assembly	61	8111038	Latch, Instruction Card	107	8111029	Cover, Rear Harness	107	8111029	Cover, Rear Harness	134	8111919	Trim-Long Strip	134	8111919	Trim-Long Strip
17	8110560	Screw, #8-32x3/4	62	8112182	Plate, Flex	108	8110543	Hub Nut	108	8110543	Hub Nut	135	8111920	Pad	135	8111920	Pad
20	8110919	Assembly, "D" Pot	63	8106302	Scr 3/8-16 x .875 HHC	109	8110817	Knob	109	8110817	Knob	136	8112199	Sleeve	136	8112199	Sleeve
22	8110918	"A" Pot Assembly	64	8110430	Cradle, Motor	110	8110823	Bolt, 3/8-16 Carriage	110	8110823	Bolt, 3/8-16 Carriage	139	*8114467	Hood Switch Bracket	139	*8114467	Hood Switch Bracket
23	8308545	"A" Spring	65	8110994	Assembly, Fan	111	8110805	Support, Pod Tube	111	8110805	Support, Pod Tube	140	*8113922	Screw, Button Hd Soc. Cap	140	*8113922	Screw, Button Hd Soc. Cap
24	8110915	"A" Pulley	66	8308817	Shutter, Rotary	112	8111056	Tie, Cable, 11"	112	8111056	Tie, Cable, 11"	141	*8112317	Nut, Kep #10-32	141	*8112317	Nut, Kep #10-32
25	8308555	Bracket, Dia Cast, Arm	67	8107635	Washer, Flat	113	8110800	Cover, Pod Tube	113	8110800	Cover, Pod Tube						
26	8110917	Shaft, Pulley	68	8104200	Washer, 3/8 Lock, Internal	114	8112839	Harness, Signal	114	8112839	Harness, Signal						
27	8308074	Bushing, Arm Rear	69	8301016	Bolt, Shoulder, 3/8x3/8	115	8113101	Cord, Power	115	8113101	Cord, Power						
28	8110916	"A" Cable	70	8308513	Cover, Bell, Rear End	116	8308062	Spring, Hood	116	8308062	Spring, Hood						
29	8301534	Screw, 1/4-20x1 HH Grade 5	71	8301805	Washer, #10 Flat	117	8112843	Hood Bar	117	8112843	Hood Bar						
30	8308535	Stop, Front	72	8301806	Washer, #10 Spring Lock	118	8140786	Plug, 220V, 3 PH	118	8140786	Plug, 220V, 3 PH						
31	8308527	Rod	73	8301804	Nut, #10-32 Hex	119	85009145	Plug, 220V, 1 PH	119	85009145	Plug, 220V, 1 PH, 30A						
32	8301143	Nut, 1/4-20 Hex	74	8110789	Bolt, 5/16-18 "U"	120	8112945	Motor	120	8112945	Motor						
33	8308546	"D" Spring	75	8181183	Nut, 5/16-18 Nyloc	121	8110920	Distance Gauge Assembly	121	8110920	Distance Gauge Assembly						
34	8110911	Nut, #10-32 Hex	76	8301084	Nut, #8-32 Kep	122	8308060	Hood	122	8308060	Hood						
35	8110912	Pin, #10-32 Spring Plunger	77	8301122	Nut, 1/2-13 Hex	123	8308820	Spring, Back Cone	123	8308820	Spring, Back Cone						
36	8308554	Roller	78	8301121	Washer, 1/2 Flat	124	8308820	Spring, Back Cone	124	8308820	Spring, Back Cone						
37	8301537	Screw Shoulder, 5/16 x .500 SHC	79	8301120	Bolt, 1/2-13x2-1/2 HH	125	8111021	Hanger, Caliper	125	8111021	Hanger, Caliper						
38	8111645	Scale	80	8309008	Stop, Hood, Rubber	126	8308095	Adapter, Large	126	8308095	Adapter, Large						
39	8308550	Arm	82	8114166	Switch, Hood Assembly	127	8308105	Ring, No-Mar	127	8308105	Ring, No-Mar						
40	8100602	Roll Pin	83	8106301	Screw, 1/4-20x3/4 LG	128	8112102	Ring, No-Mar	128	8112102	Ring, No-Mar						
41	8308078	Rod	84	8106303	Nut, 3/8-16 Hex	129	8110542	Pressure Cup	129	8110542	Pressure Cup						
42	8110807	Bushing, Front	85	8108727	Rod, Threaded	130	8110410	Cone, Small	130	8110410	Cone, Small						
43	8143956	Retainer	86	8307008	Spring, Piezo												
44	8110168	Stop	87	8308036	Retainer, Piezo Spring												
45	8110966	Instruction Card, Cal/MM	88	8301035	Nut, 3/8-16 Nyloc												
46	8110806	Bracket	89	8114473	Piezo Kit												
			90	8301017	Ball, 1/2, Steel												
			91	8113023	Transformer												
			92	8301082	Screw, #8-32x1/2 PHM												
			93	8110923	Assembly, Encoder												

Model 1000DC Only:

- \*85000705 Motor Module Assy, 1 PH
- \*85000704 Motor Module Assy, 3 PH
- \*83090057 Wire Assembly
- \*83090005 Wire Assembly
- \*8301084 Hex Nut, Kep. #8-32
- \*8111542 Screw-PHP, #8-32 x 5/8 SEM

\* Not Shown

\*\* Before S/N 0606304914 use 8120325

